

Laying Corelux vinyl plank throughout house, except for bathrooms and sun room, which are staying tile.

Flooring project is part of renovation being done in stages:

- Remove popcorn ceilings in Master Suite – Done
- Floor Master Suite
- Floor East bedrooms and closets
- Remove popcorn ceiling in Living Room
- Remove picture frame paneling in Living Room
- Floor Living Room
- Floor Entry / Office
- Remove tile floor in Kitchen/Utility/Nook
- Texture and paint Kitchen/Utility/Nook ceiling
- Floor Kitchen/Utility/Nook
- Floor In-Law Suite (Den / BR)

Planks will lay in E-W along the long access of the house (i.e. down the main hallway). The goal to avoid all transitions.

Pretty clear to start the layout process in accordance with videos in the main hallway. Hallway is 42 inches wide. Planks are 7-1/8 wide, so I really don't need to move the center line, as I could just trim the Northern row to 6.3 inches – not that bad. However, I will adjust as needed for optimum plank placement in the hallway / bedroom's 6 doorways that are parallel to the planks.

Main reference line runs through the Living Room, down the Hallway and into the East Bedroom. It is measured to the front (southern) sill plate as shown in "Layout Reference Lines".

Now for the question: Where to start laying the planks? Note that I keep the main reference line in the same place; I omitted it from the option drawings for clarity.

- Option 1 starts in the hall and places the master rows of planks along that main 56-foot LR/Hall/BR line. Downside is that about 50% of the job needs to go backwards (red).
- Option 2 starts in the Master Bedroom and vastly reduces the backwards work. Once I get to the doorway of the Master, I can run that big row down the hallway and make sure everything stayed good with respect to the main reference line.
- Option 3 would minimize the amount of backwards work but might not be physically possible. I start in the Master Bedroom and lay a temporary set of planks over the tile in the Sun Room. This creates a 46-foot master row that spans the two largest rooms. However, the Master Bedroom and Living Room have a wall between them. This option would require meeting back up at the doorway between the Living Room and Hallway. Is that even possible? I plan to floor the Master Bedroom and hallway first. When I do the Living Room, I could lay a series of temporary planks straight from the master row in the Sun Room to the Hallway to make sure the meetup happens. Absolute worst-case is giving up and putting a T-bar in the Hallway doorway (but REALLY want to avoid that).

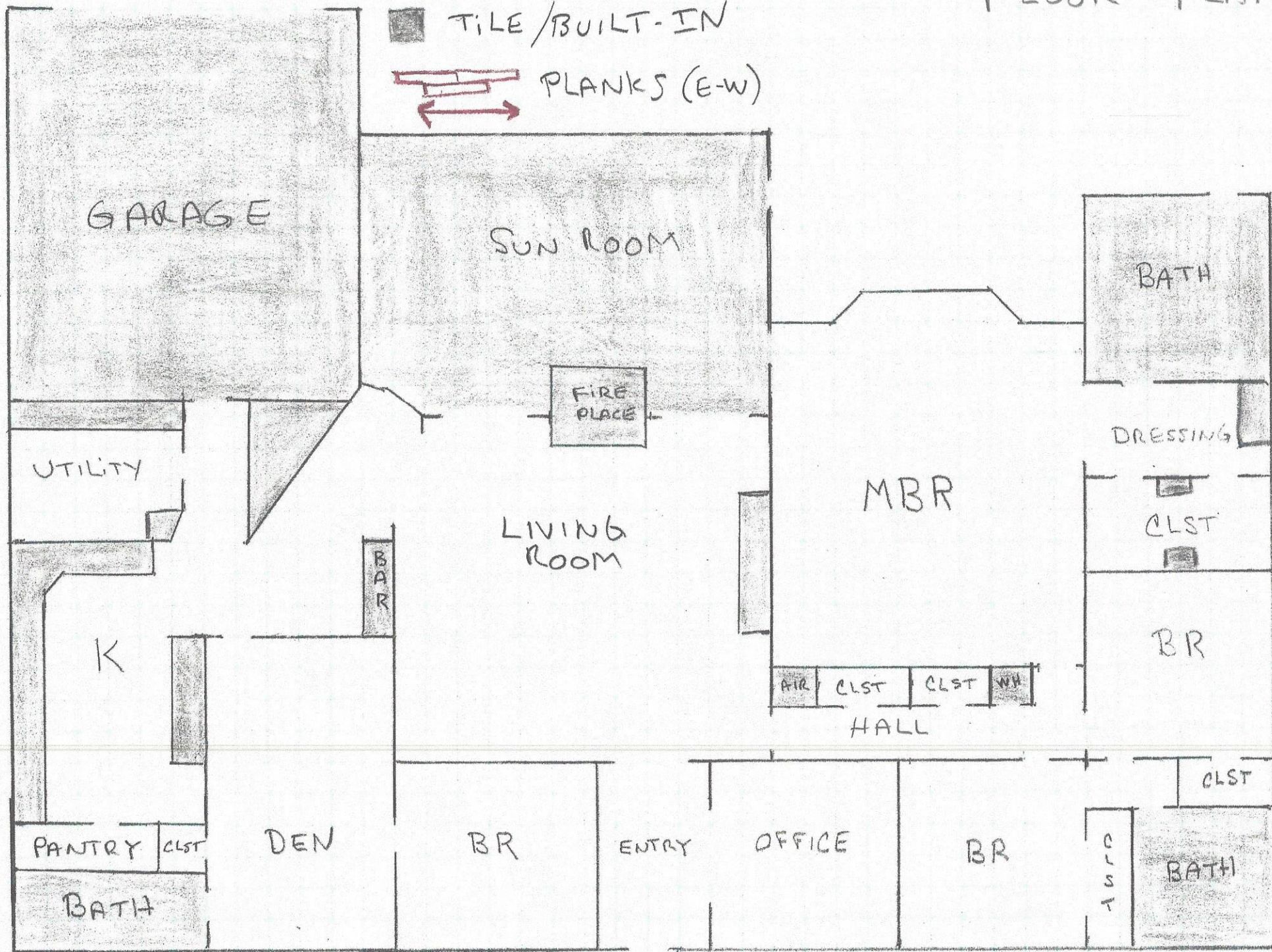
↑ N

□ 1 SQ = 2 feet

■ TILE / BUILT-IN

PLANKS (E-W)

# FLOOR PLAN





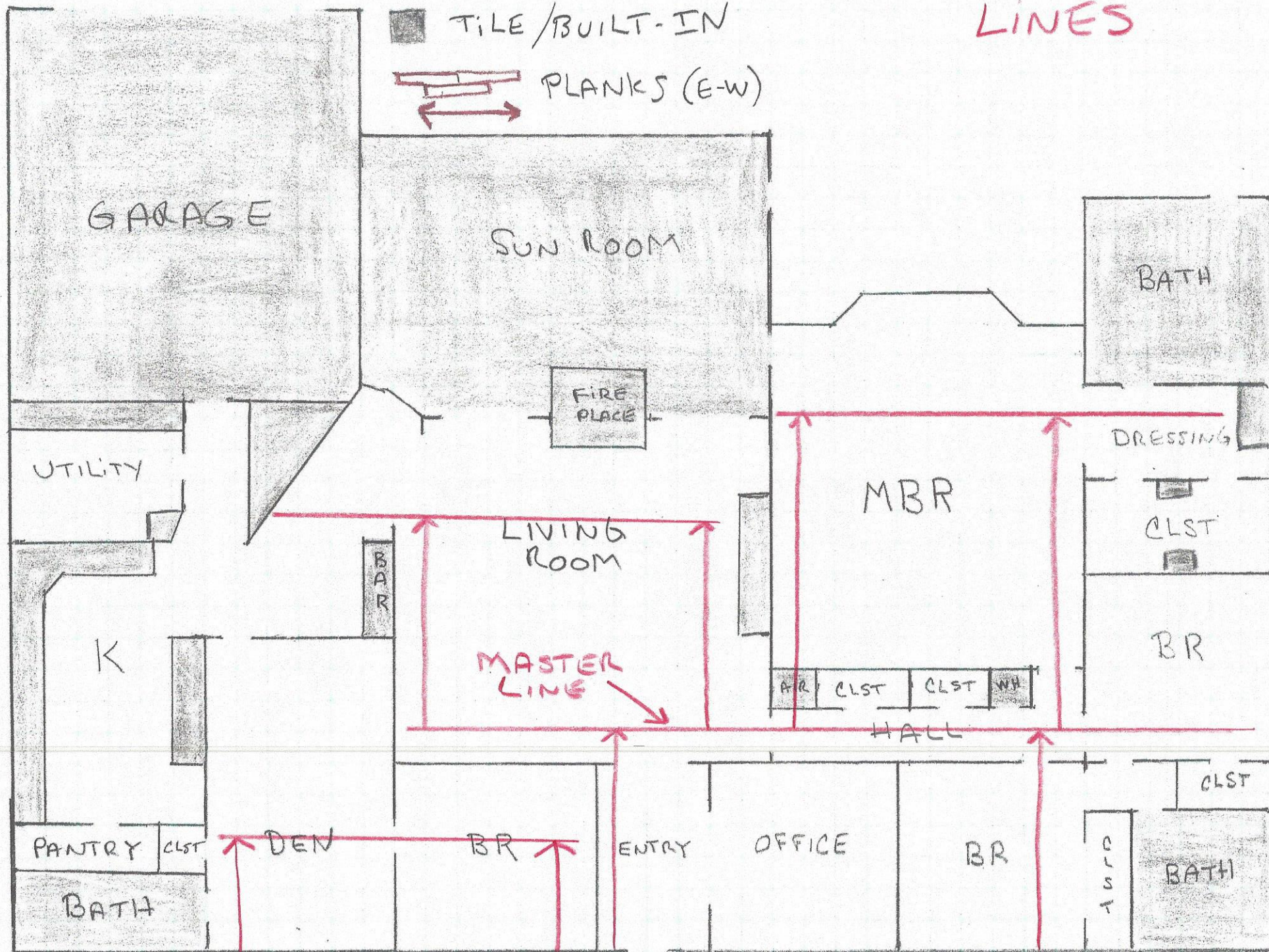
↑ N

□ 1 SQ = 2 feet

■ TILE / BUILT-IN

PLANKS (E-W)

LAYOUT REFERENCE  
LINES





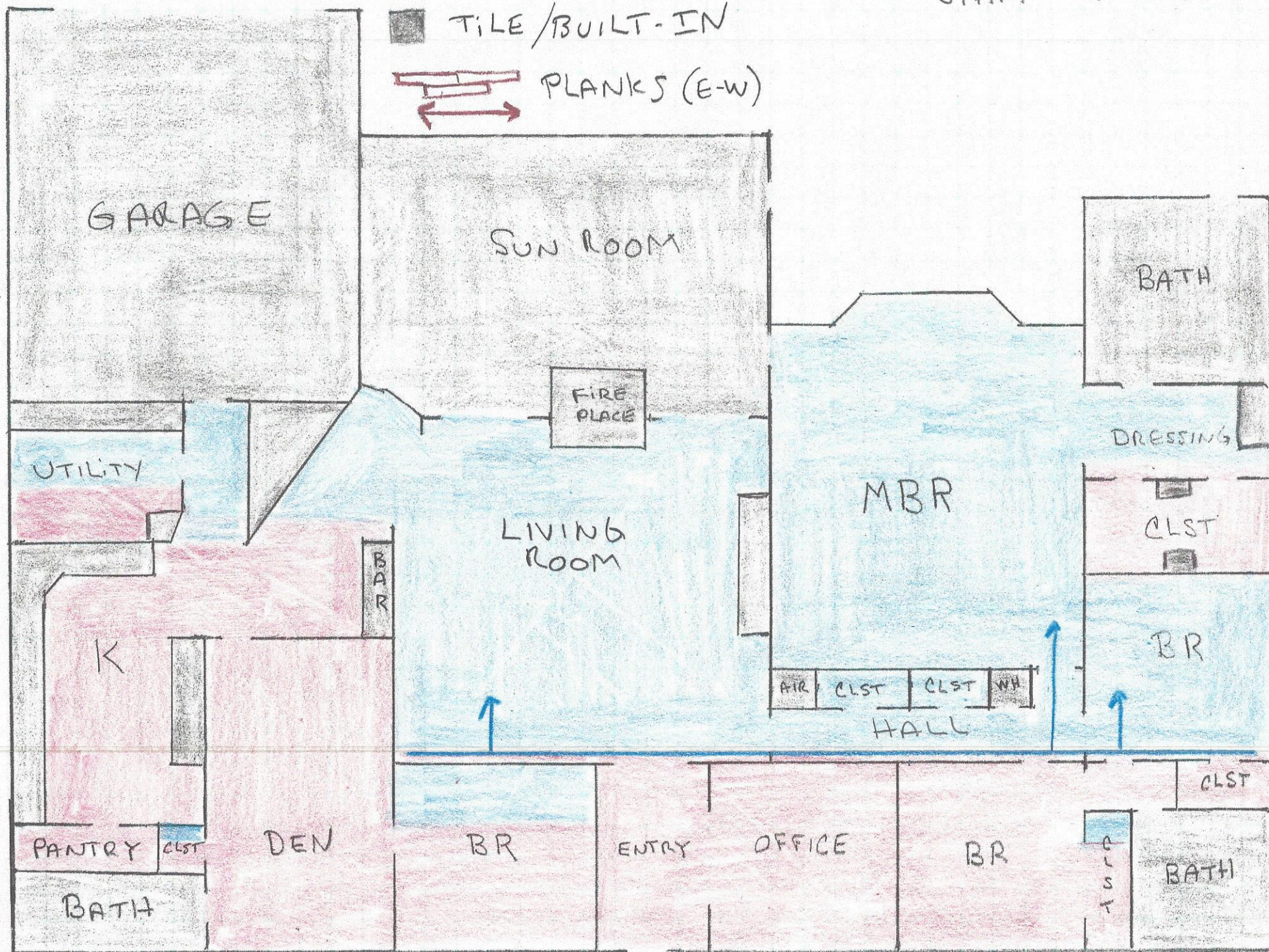
↑ N

□ 1 SQ = 2 feet

■ TILE/BUILT-IN

PLANKS (E-W)

OPTION 1  
START IN HALL





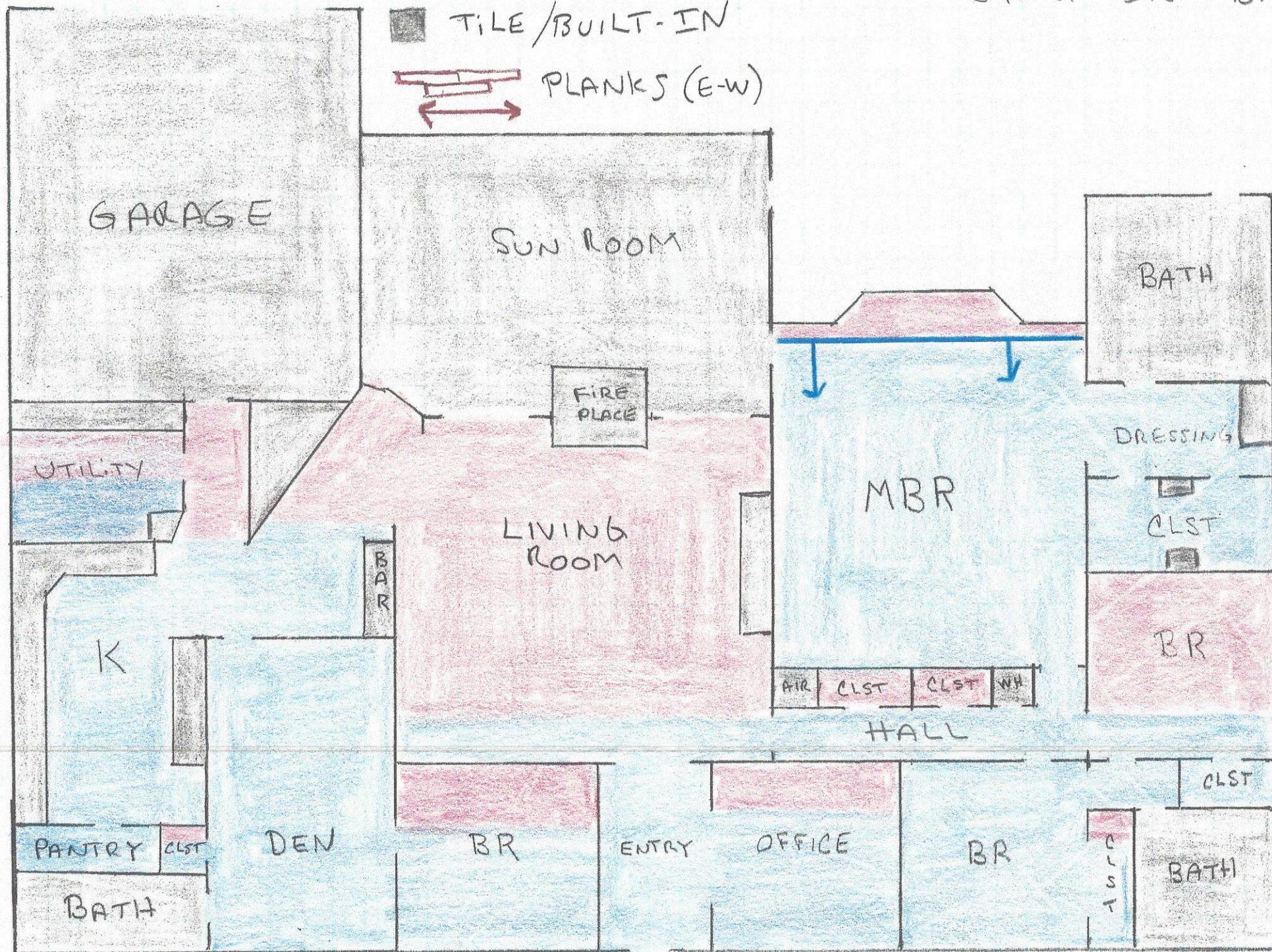
↑ N

□ 1 SQ = 2 feet

■ TILE/BUILT-IN

PLANKS (E-W)

OPTION 2  
START IN MBR





↑ N

□ 1 SQ = 2 feet

■ TILE/BUILT-IN

PLANKS (E-W)

OPTION 3

IS THIS POSSIBLE

